

## Addendum No. 1

Issued: July 6, 2021

Project: BCC Ciccone Theatre Roof Replacement

No. of pages: 1

---

To all Bidders:

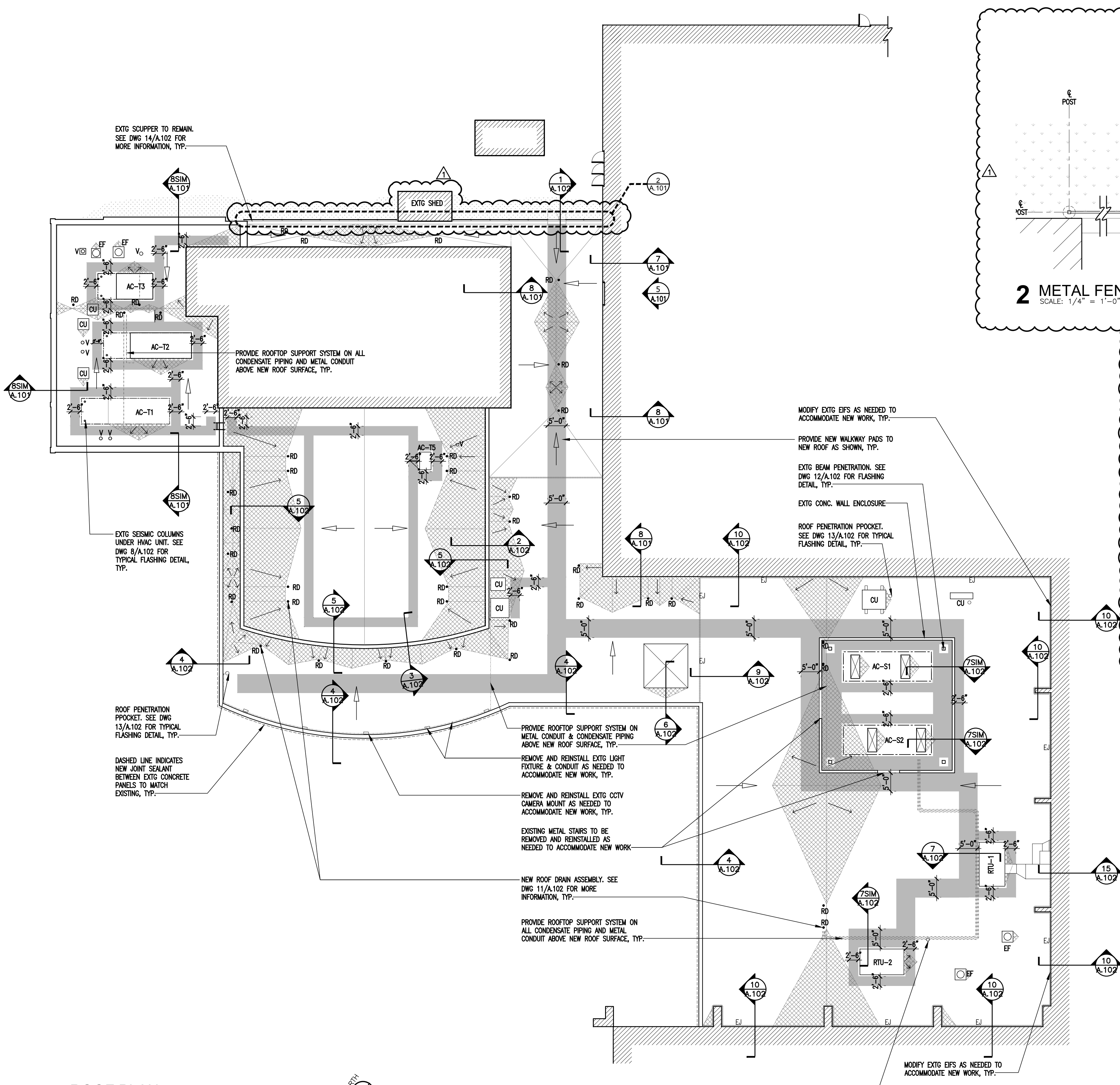
In accordance with Instructions to Bidders, Bid Forms, etc., the following modifications, deletions, and additions to the Drawings and Specifications shall become a part of the Contract Documents superseding previously issued documents to the extent modified by this Addendum.

Acknowledge receipt of all Addendum in the space provided on the Bid Forms.

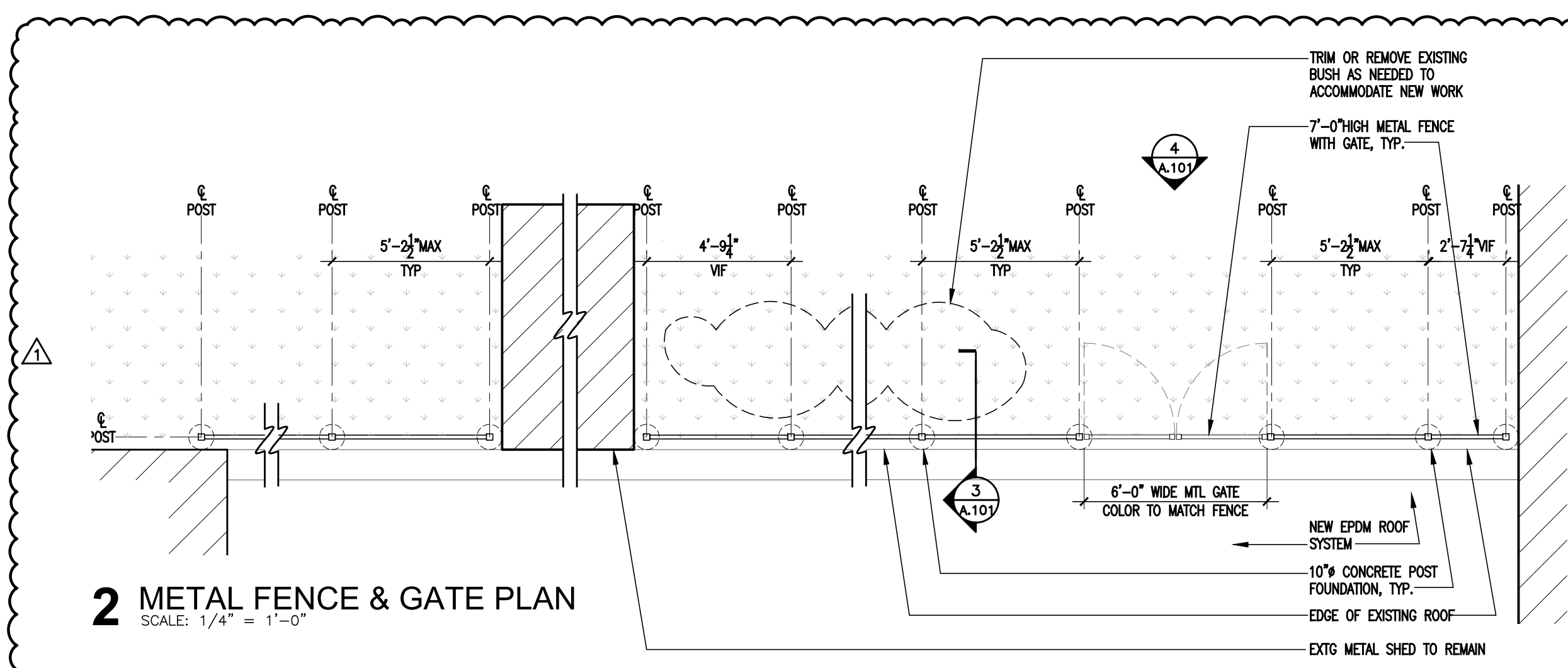
### Modifications

- Item #1 Sheet A.101 Roof Plan, Metal Fence & Gate Plan and Elevations, Storefront Elevation & Details
- a. The Scope of Work of new metal fence has changed as shown in DWG.1/A.101 Roof Plan, DWG.2/A.101 Metal Fence & Gate Plan, DWG.3/A.101 Metal Fence Detail, and DWG.4/A.101 Metal Fence & Gate Detail.

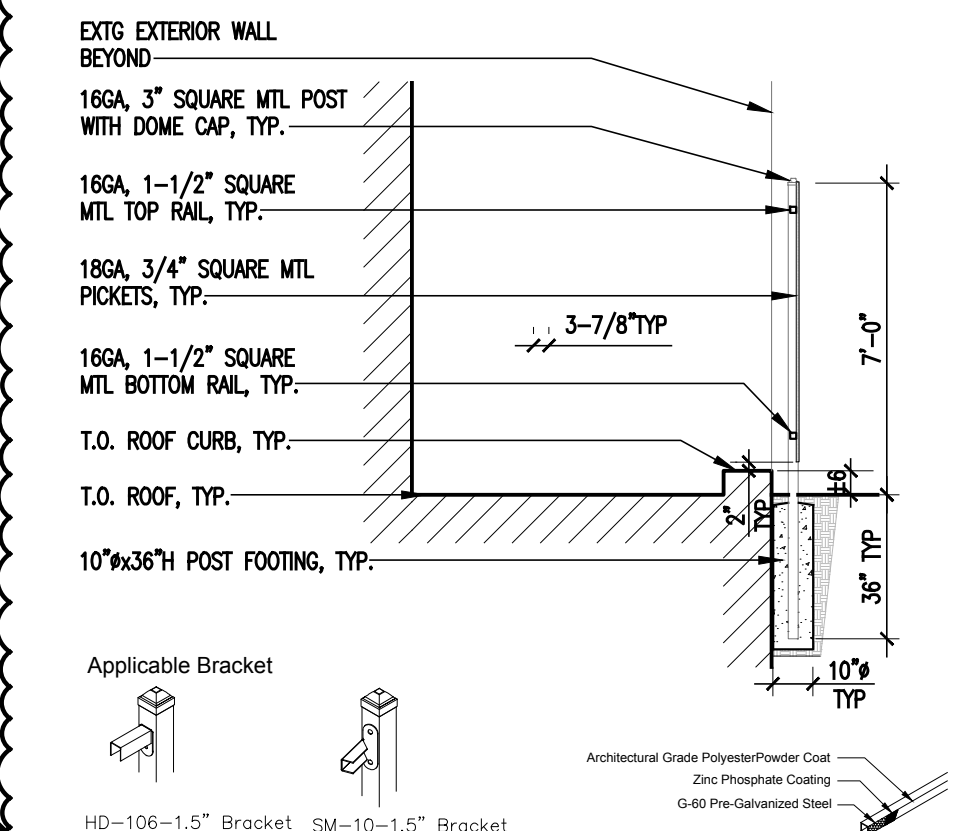
END OF ADDENDUM



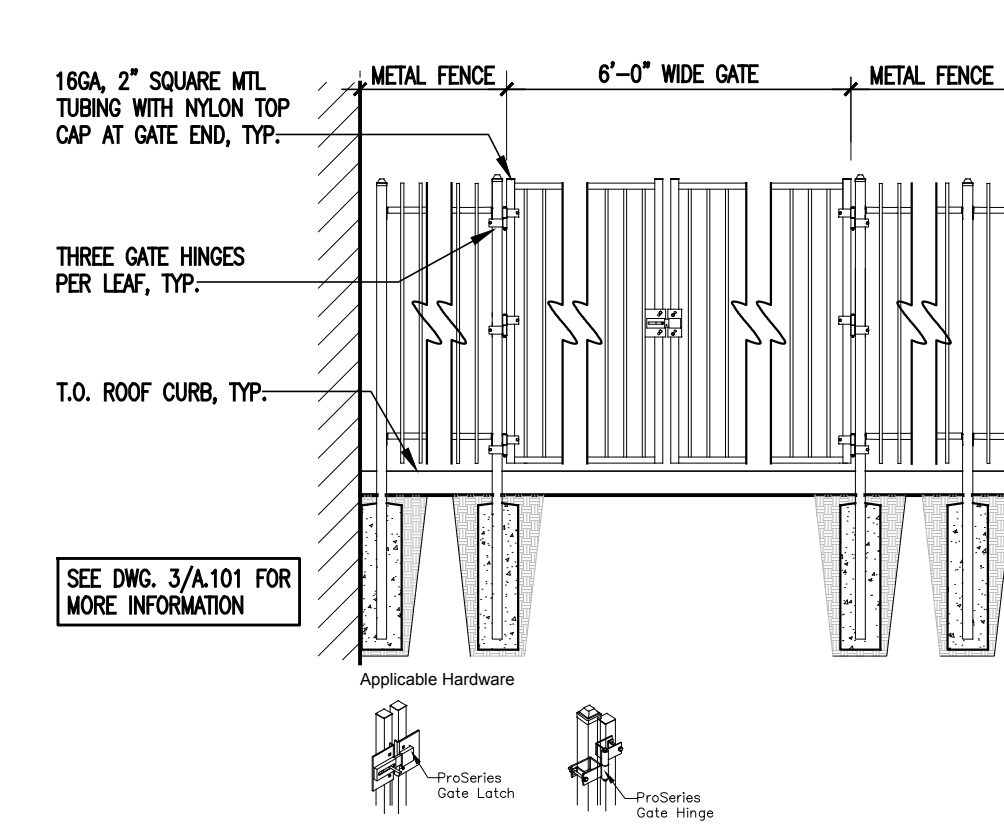
**1 ROOF PLAN**  
SCALE: 1/16" = 1'-0"



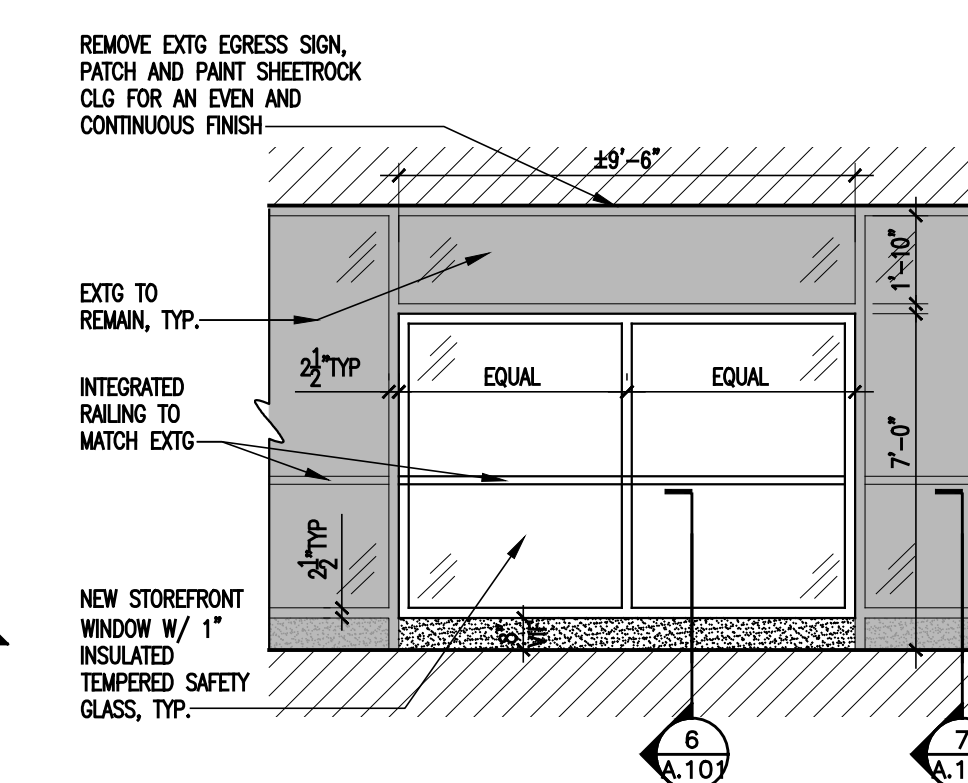
**2 METAL FENCE & GATE PLAN**  
SCALE: 1/4" = 1'-0"



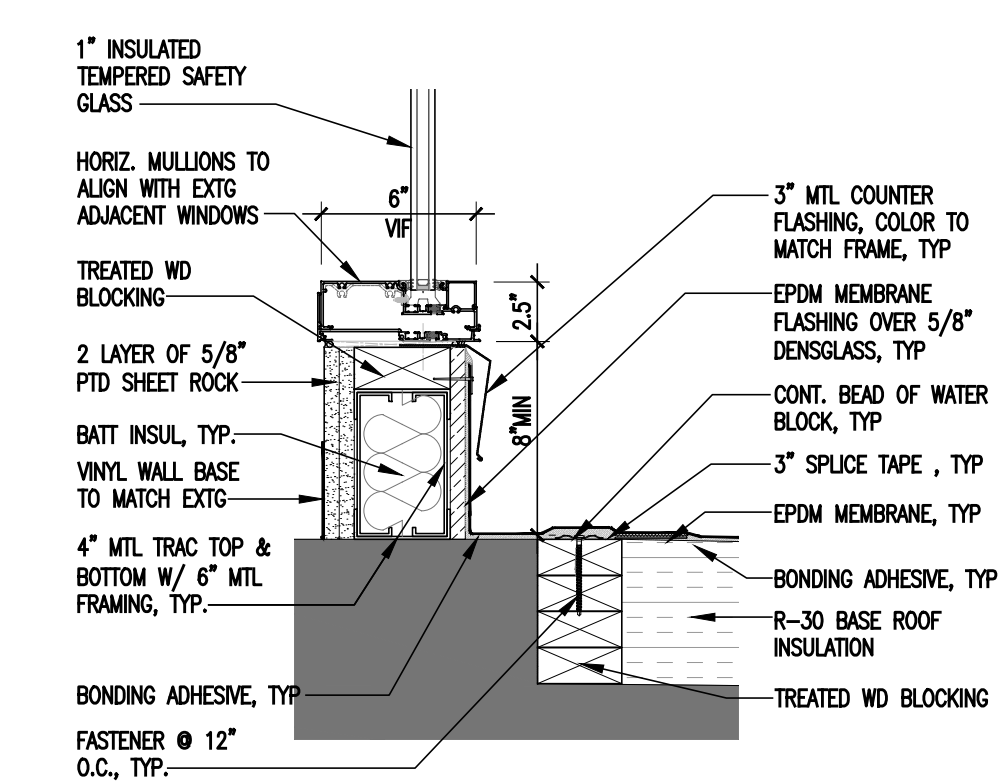
**3 METAL FENCE DETAIL**  
SCALE: 1/4" = 1'-0"



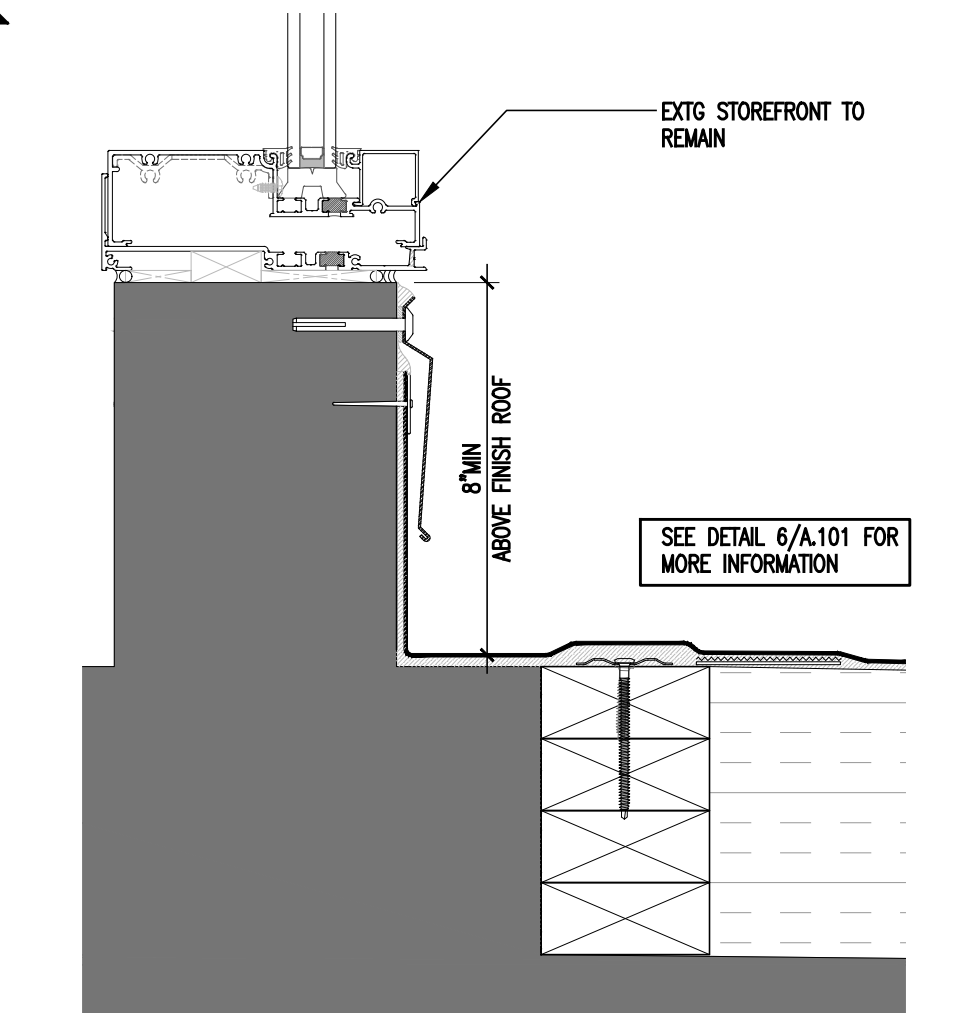
**4 METAL FENCE & GATE DETAIL**  
SCALE: 1/4" = 1'-0"



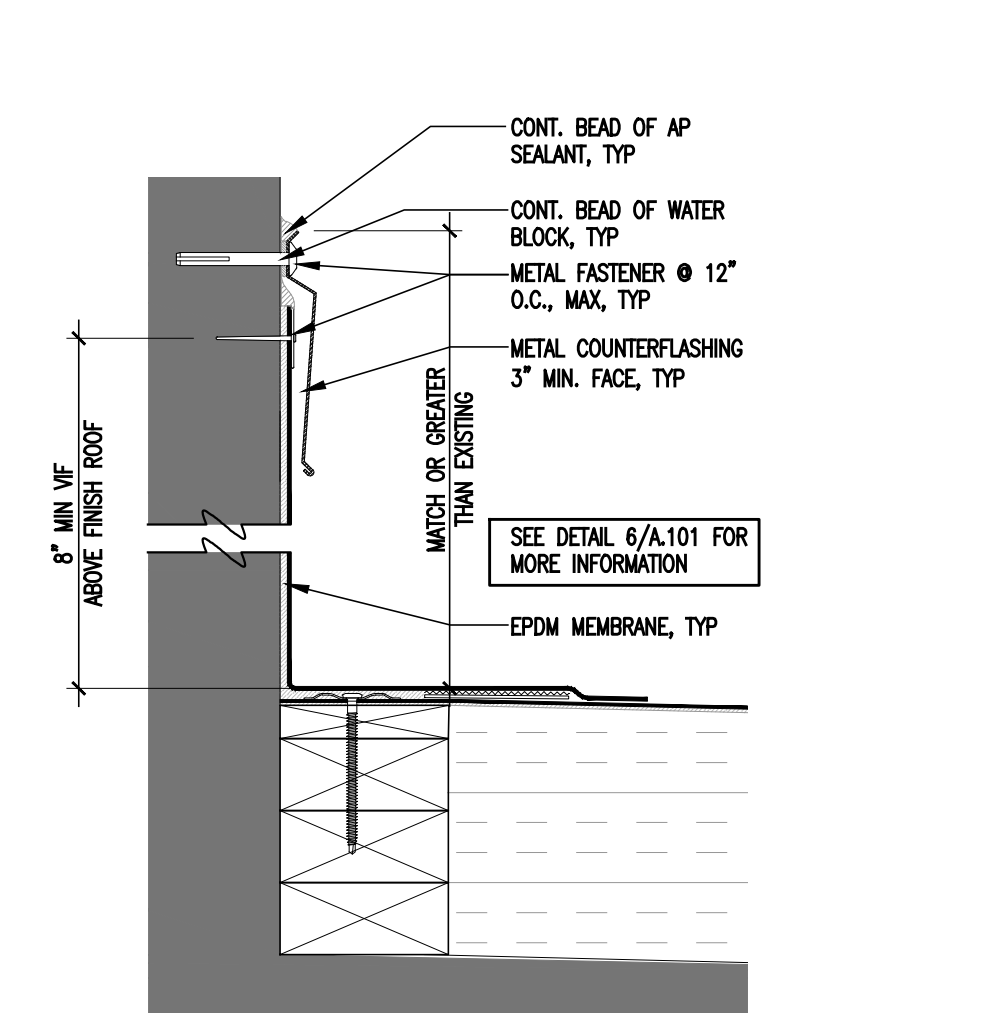
**5 STOREFRONT WINDOW ELEVATION**  
SCALE: 1/4" = 1'-0"



**6 STOREFRONT WINDOW DETAIL**  
SCALE: 1-1/2" = 1'-0"



**7 TYP FLASHING DETAIL**  
SCALE: 1-1/2" = 1'-0"



**8 TYP. ROOF FLASHING DETAIL**  
SCALE: 3" = 1'-0"

**LEGEND**

	TAPERED INSULATION TO PROVIDE POSITIVE PITCH TOWARDS DRAIN, MIN 1/2" PER FOOT, TYP.
	ROOF WALKWAY PADS, TYP.
	EXISTING ROOF DRAIN, TYP.
	EXISTING PIPE VENT, TYP.
	EXISTING EXHAUST FAN, TYP.
	EXISTING CONDENSING UNIT, TYP.
	EXISTING AIR CONDITIONING UNIT, TYP.
	EXISTING ROOF TOP UNIT, TYP.
	STRUCTURAL SLOPE DIRECTION
	TAPERED SLOPE DIRECTION

- ROOF NOTES**
- 1) ALL TAPERED ROOF INSULATION TO SLOPE TOWARD DRAINS AT 1/2" PER FOOT MINIMUM, U.O.N.
  - 2) BLOCKING AS SHOWN ON THE DRAWINGS IS FOR GENERAL INTENT AND MAY NOT ACCURATELY DEPICT THE ACTUAL BLOCKING REQUIRED THROUGHOUT THE PROJECT. GC IS RESPONSIBLE TO PROVIDE THE SIZES AND QUANTITIES OF BLOCKING REQUIRED FOR VARYING SLOPES AND CONDITIONS.
  - 3) METAL COUNTER FLASHING SHALL BE 24GA PRE-FINISHED STEEL OR 0.032" MIN ALUMINUM FORMED WITH HEMMED LOWER EDGE
  - 4) FOLLOW MANUFACTURER'S INSTALLATION PROCEDURES.
  - 5) CONTRACTOR MUST VERIFY ALL EXISTING CONDITIONS AND DIMENSIONS IN THE FIELD.
  - 6) REFER TO ROOF SPECIFICATIONS FOR MORE INFORMATION.

- STOREFRONT NOTES**
- BASIS OF DESIGN:
- KAWNEER TRIFAB 601T
  - 6" DEEP WITH 2" SIGHTLINES.
  - OUTSIDE GLAZED FRAMING APPLICATION.
  - DUAL ISOLOCK LANCES & DEBRIDGED THERMAL BREAK.
  - 1" INSULATED SAFETY TEMPERED GLASS.
  - COLOR AND FINISH TO MATCH EXISTING.

- ROOFTOP SUPPORT**
- BASIS OF DESIGN:
- nVent CADDY PYRAMID UNIVERSAL SUPPORT
  - UV-STABILIZED THERMOPLASTIC BASE MATERIAL
  - DISTRIBUTE ROOFTOP SUPPORT SYSTEM MIN. 5'-0" O.C., TYP.
  - FOLLOW MANUFACTURER'S RECOMMENDED INSTALLATION PROCEDURES.

- METAL FENCE & GATE**
- BASIS OF DESIGN:
- FOREST FENCE PRODUCTS OR APPROVED EQUAL. SEE SPECIFICATIONS FOR MORE INFORMATION.

07.06.2021 ADDENDUM #1  
12.09.2020 BID SET DRAWINGS

**BERGEN COMMUNITY COLLEGE  
CICCONE THEATRE  
ROOF REPLACEMENT**

400 PARAMUS RD. PARAMUS, NJ 07652

**arcari iovino**  
ARCHITECTS PC

ONE KATHERINE STREET  
LITTLE FERRY, NJ 07643  
201 641 0600, FAX 201 641 0626  
WWW.AIARCHS.COM

EDWARD ARCARI NJ#12306 ANTHONY IOVINO NJ#11720

**ROOF PLAN  
METAL FENCE & GATE PLAN & ELEVATIONS  
STOREFRONT ELEVATION & DETAILS**

SCALE: AS NOTED  
DATE: 12.09.2020  
FILE: 2012CurrentA.101.dwg  
©2020 arcari + iovino ARCHITECTS PC

**A.101**